

1653 East Main Street
 Rochester, NY 14609 USA
 Voice: 585.482.0300
 FAX: 585.288.5989
 imaging@appliedimage.com

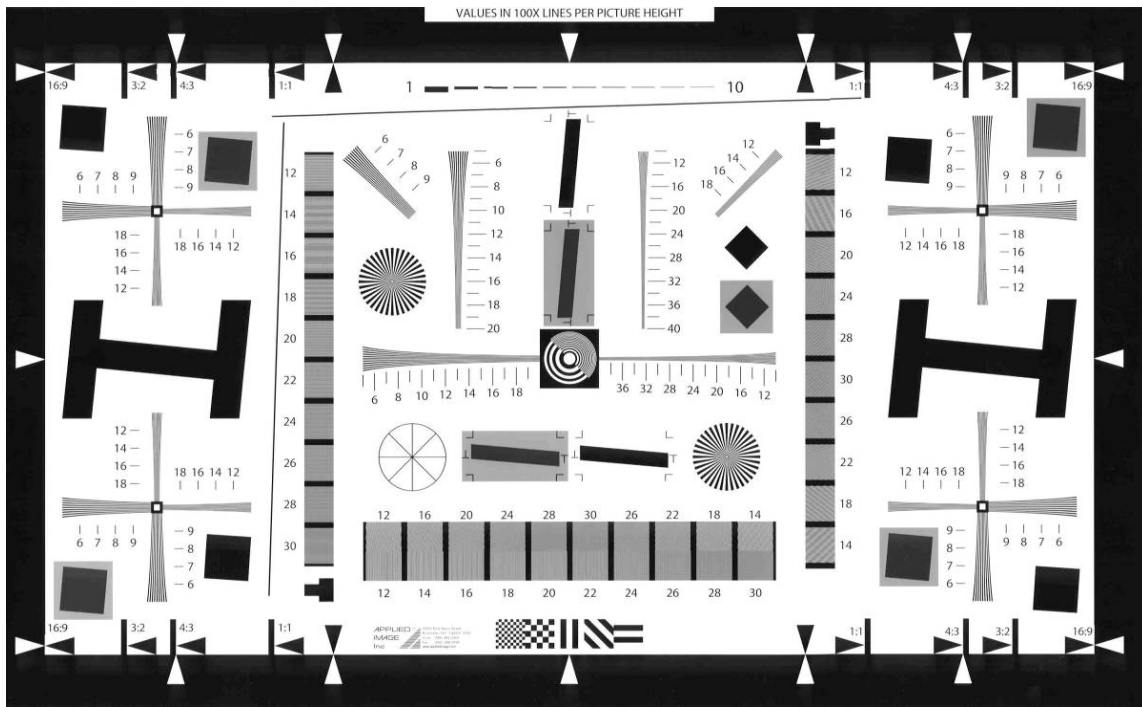
QA-77
 Enhanced Electronic Still
 Picture Test Chart
 (ISO-12233 based)
 Product Specifications



Catalog Part No: QA-77-P-RM (1x size), QA-77-2-P-RM (1/2x size),
 QA-77-3-P-RM (2x size) , QA-77-4-P-RM (4x size)

Product Name: Enhanced Digital Camera Resolution Chart

Drawing / Photo of part:



The above image is an approximate representation of the actual product.
 Specifications are subject to change without notice.

Description: Image evaluation tool for resolution and SFR (MTF) measurement

Sizes and Image Forming Material:

Part Number	Substrate Size (mm)	Active Image Area (mm)	Substrate Type	Image Forming Material
QA-77-P-RM	1X	240 x 395	Photo-paper	Photographic emulsion
QA-77-2-P-RM	1/2 X	198 x 120		
QA-77-3-P-RM	2X	480 x 791		
QA-77-4-P-RM	4X	960 x 1582		

Note: QA-77-4-P-RM (4X size does not contain gray features, it consists of black and white line work only.


1653 East Main Street Rochester, NY 14609 USA Voice: 585.482.0300 FAX: 585.288.5989 imaging@appliedimage.com	QA-77 Enhanced Electronic Still Picture Test Chart (ISO-12233 based) Product Specifications	APPLIED [®] IMAGE Inc 
--	---	--

Image Description:

(For reference, please refer to the ISO-12233 standard document.)

This test chart is an enhancement of the ISO-12223 chart and contains the following improvements:

- Extended resolution ranges. Central hyperbolic wedges measure to 4000 lw/ph (line widths per picture height). Corner wedges measure to 2000 lw/ph.
- Two star sector targets have been added.
- Additional SFR features provide SFR analysis at reduced contrast for better correlation to average pictorial grayscale image data. Dark grey rotated squares (5 degrees) have nominally 8% reflectance on grey background of nominally 32% reflectance.
- Short line-pair series (square wave sweep) and slanted short line-pair series (tilted square wave bursts) measure a range from 1200 to 3000 lw/ph.

Polarity: Positive image features

Image Contrast / Density: 40:1 / 4:1 typical

Terms: *Line widths per picture height (lw/ph)*; resolution features on this chart are labeled in line widths x 100 per picture height. Note that each line transition is counted.

Related Information:

- Standard Document ISO-12233
- Slant Edge Analysis Tool can be found at www.i3a.org/downloads_iso_tools.html

Related Parts: QA-72, QA-76, QA-62, QA-61